



*Summer camp in full
swing at Emerson
Playground, 2023*

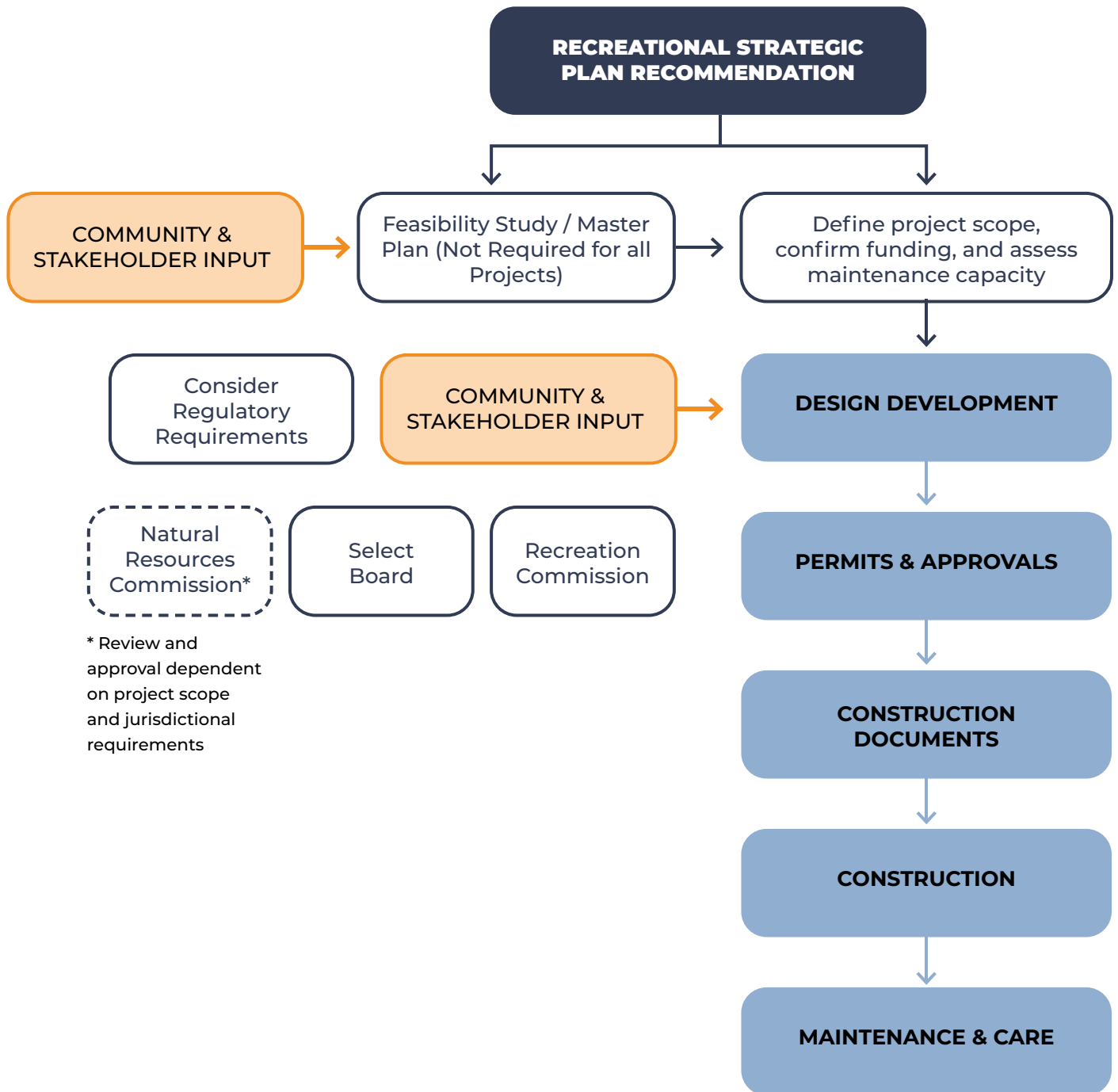


Success Monitoring
*(How do we
know we've been
successful?)*

Process of Park Improvements

Once a project is selected for implementation and funding is secured by the project champion, or designated Town department leading the project, it will enter a process of refinement. At this stage, the project's scope and design are confirmed and adjustments to maintenance regimes are considered to prepare for the property's long-term care. Many Town-owned properties are managed, maintained, or permitted for use by multiple Town departments so on-going coordination with Town partners and other key stakeholders is

critical to ensuring the project's long-term success. Additional site analysis and study will be conducted in parallel with ongoing community engagement before the project is submitted for required permits and approvals. The project design team will refine the details and prepare construction documents for contractors who will bid on and build the project. Once the project is built, regular maintenance and routine annual inspections by the appropriate Town departments of the new property will safeguard users and ensure a well-cared for recreational resource.



Annual Monitoring Procedures

Regular review of work completed is critical to this plan's long-term success. Collectively, the three methods described below will create an annual feedback loop. Concord Recreation would be the champion of the Annual Park User Survey and Traditional Metrics areas, while Concord Facilities and Public Works jointly would be responsible for the Annual Inspection Program; however, regular communication amongst Town departments is necessary to ensure progress is made on realizing recommendations from this plan, especially where

Town departments share responsibilities for a recreational resource. Continued coordination between Concord Recreation, Concord Facilities and Public Works, Natural Resource Division (DNR), Concord-Carlisle Regional School (CCRS), Beede Enterprise, and other relevant entities advances Concord's goal that Town lands remain public and open to all members of the community.

Annual Inspection Program

Town-wide recommendation #5, Annual Inspection Program, is one of the easiest ways for the district to gauge projects are being completed. Park inventory analysis can also be performed, independently or as part of the maintenance inspection process, to determine increases or decreases in park conditions by evaluating current conditions against the site evaluations performed as part of this planning effort.

Annual Park User Survey

An annual park user survey is another way the Town can monitor whether or not expectations are being met.

Although these types of surveys are not scientific or statistically accurate, they do provide immediate feedback from the people in the parks.

Traditional Metrics

Traditional performance measures for park and recreation should also be utilized, typically monitored annually, including:

- Acres of new park land acquired
- Number of park master plans completed
- Number of new park sites developed
- Number of recommended capital projects completed
- Number of recommended maintenance projects completed

Successful Outcomes

Metrics to measure progress and success are key in advancing the recommendations within this plan. These should be reviewed annually to ensure goals are being advanced and improvements to Concord's recreational facilities are being made.

1. Conduct Specialized Studies

A. Town-wide Water Access Plan

- If this plan is pursued, a Conservation Commission and Recreation Commission endorsed plan that identifies more water access points along Concord's three (3) rivers equitably spread through the Town.
- Addition of at least one (1) accessible boat launch.
- Addition of at least one (1) new splash pad / spray deck or other water play element within a playground for people to play with water.
- Swim lessons made available for free to every child under the age of six at White Pond Beach, or other appropriate locations.
- Pilot a rental program for small non-motorized boat rental at Warner Access Point or another an identified location.
- Consider collaboration with Concord-based kayaking or wild swimming communities to develop water-based programming including clubs and/or organizations such as the River Stewardship Council to develop additional paddling guides to Concord's three (3) rivers.

B. Multi-modal Transportation Planning

- Recreation facility or conservation land 10-minute cycle-ride from every home.
- Implement next phases of the Bruce Freedman Rail Trail.
- Addition of sidewalks, where needed.
- Addition of shared-use paths or dedicated bike lanes with lighting connecting West Concord with the historic Town Center.
- At least ten (1) new programs promoting cycling in Concord, such as regular bike rodeos for children, bike to school day, or bike parades as part of regular Town celebrations.

C. Rectangular Field Use Study

- Clear understanding of the number of rectangular sports fields needed for the growing demand for sports on these fields.
- Plan for identifying which existing fields will be upgraded and where land acquisition is required.
- Future prediction of sports popularity.
- Better understanding of permitting data through league interviews and collaboration with the school system permitting, uses, specialization of sports, and understanding of sports trends in Concord and Metro West.

2. Improve or Expand Current Recreation Facilities

A. Consistency of Facility Signage and Site Furnishings

- Branding package completed.
- Number of parks with updated signage.
- Master Plan for Emerson Park completed.
- Suite of site furnishings identified.

B. Annual Inspection Program

- Systematic Evaluation Program in place for evaluating needs at each recreation facility and action plan for addressing hazardous/immediate needs
- Two (2) staff people trained as Certified Playground Safety Inspectors.

C. Indoor Recreation Upgrades

- Renovation of at least two existing Town properties to host new desired programming (eg. Harvey Wheeler Community Center, Peabody Middle School, and Ripley School Gymnasium).

D. More Outdoor Courts of all Types

- All existing basketball courts have been resurfaced.
- Repairs made to tennis/pickleball courts at Rideout Park.
- Addition of at least two (2) outdoor basketball courts (with integrated futsal goals or similar).
- Addition of six (6) new pickleball courts.

E. More Diverse Play Opportunities

- Addition of at least one (1) tot lot geared toward 2 to 5 year old children; consider integration of water play.
- Addition of at least two (2) more creative playgrounds geared toward 5 to 12 year old children.
- Addition of at least one (1) water-based play space (splash pad, playful fountain jets, water pump in sand box, etc).
- Addition of at least one (1) new play space for tweens and teens (could be a pump track, frisbee golf, or hang-out shelter).

3. Develop New Recreation Facilities

A. Indoor Recreation Facility

- Town acquisition of the 2229 Main Street or similar property for a new Indoor Recreation Center to meet growing demand.
- Conceptual planning for the redevelopment of 2229 Main Street.

B. Outdoor Civic Gathering Spaces

- Complete a Master Plan for Emerson Park, including re-design of entrance to Emerson Park at Hunt Recreation Center as a significant gathering space.
- Design and installation of a central civic gathering space at Rideout Park; consideration of water-based play in this space.
- Design and install a gathering space at Cousins Field's community gardens.
- Designation of existing Town-owned land or the acquisition of new land for a performing arts lawn and civic gathering space to accommodate events, festivals, and Town celebrations.

C. Trailhead Nature Education / Maker Space

- Build at least one (1), preferably two (2), Nature Education Trailhead stations to connect Concord's extensive trail and water way systems and create more nature-based learning.

D. New Centralized Skating Rink

- Trial a seasonal ice skating rink in Concord annually for three (3) years to gauge popularity with the community and ensure the rink's continued success. Add a permanent installation if successful.
- Develop community programming around the ice skating rink such as skating lessons, designated open skate and pick-up hockey time slots, or First Night Ice Skating Spectacular event.

E. New Dedicated Dog Runs

- Addition of two (2) new dog runs with one being located near the Town center.